

# USER FLOWS

# USER FLOWS

---

Allows us to visualize the **path** a user takes through an application

Analyze the **efficiency** of a task

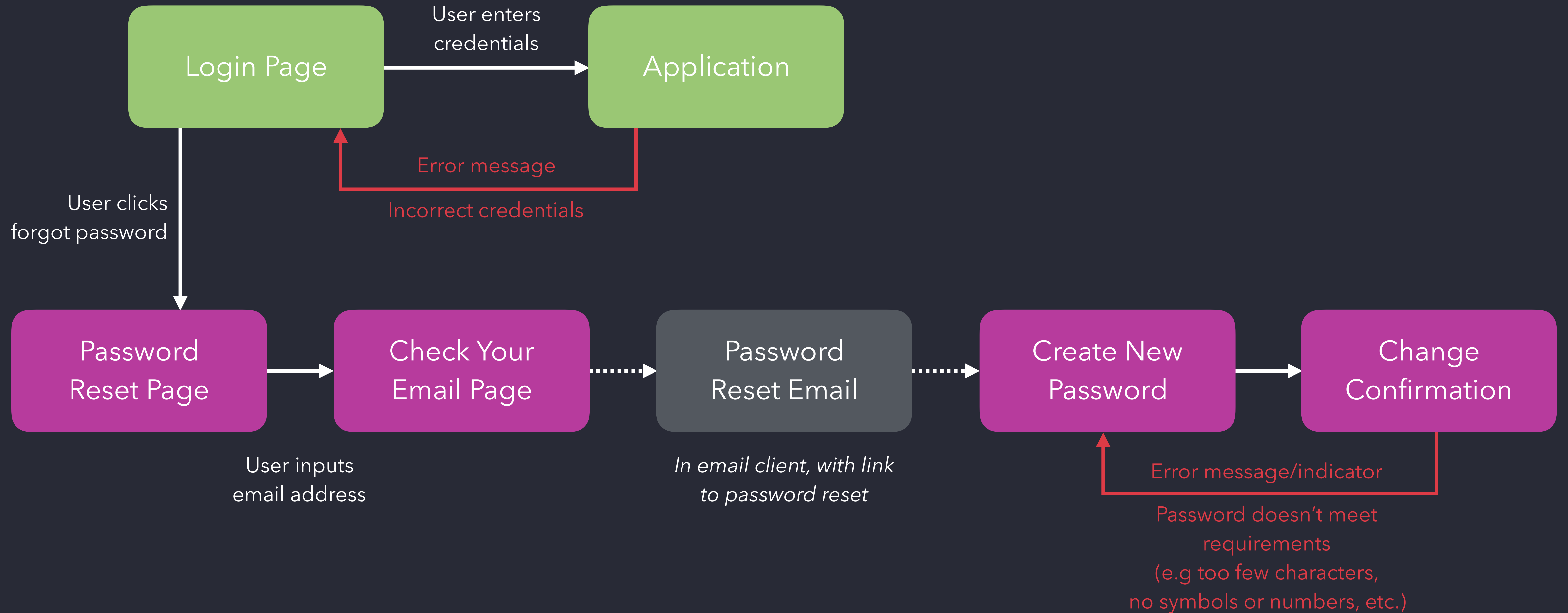
How many steps does the user have to take to complete a task?

Each piece of a flow represents something that must be *designed*

Even seemingly simple tasks can actually be quite complex

# LOGIN EXAMPLE

---



# LOGIN EXAMPLE: OTHER CONSIDERATIONS

---

## Account lockout

Many services will lock an account for a period of time after x failed login attempts

## New password requirements verification

## Password reset link expired

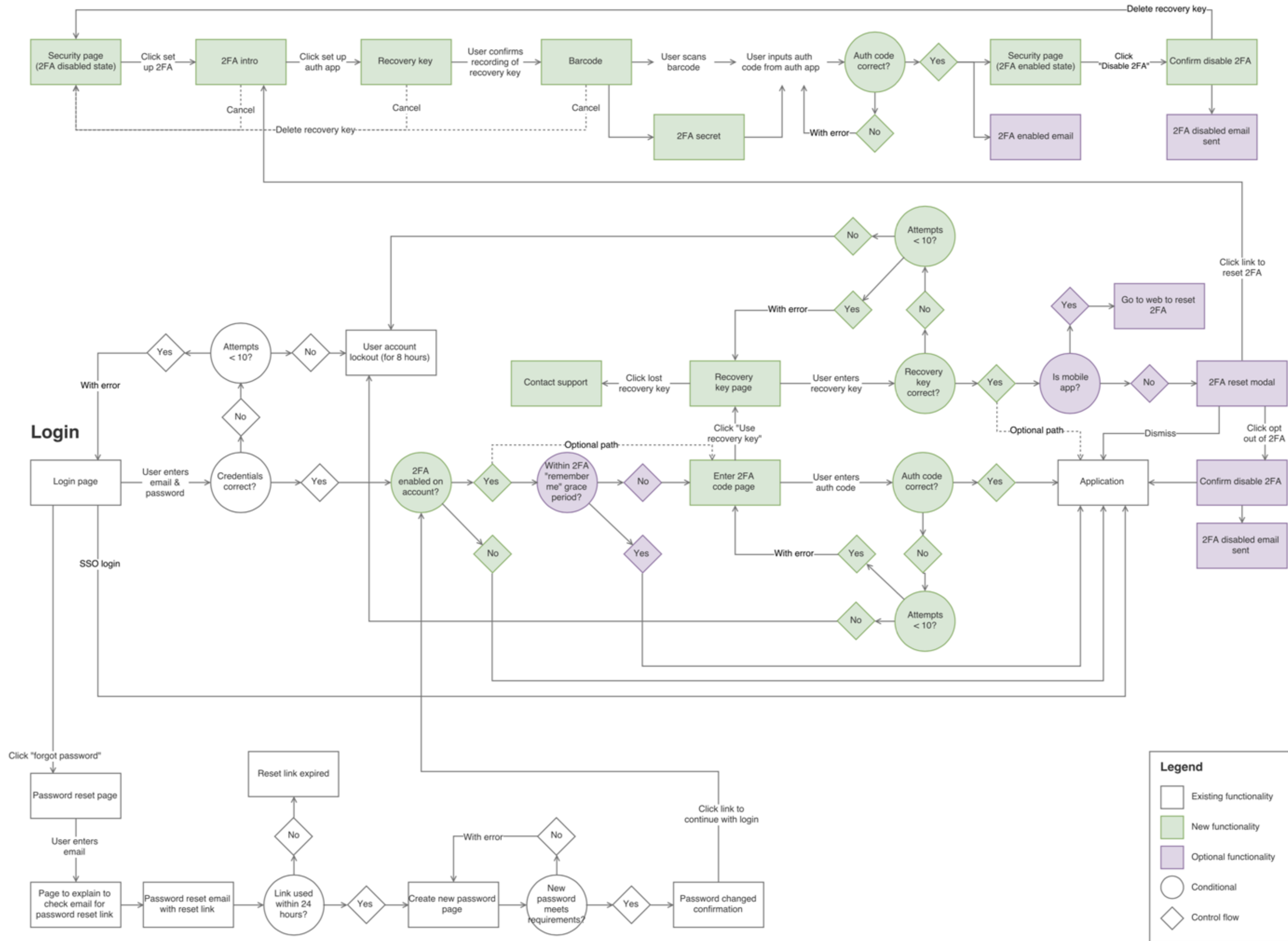
## 2FA: Different methods for receiving auth code

## 2FA: Recovery codes

## 2FA: Remember this device grace period

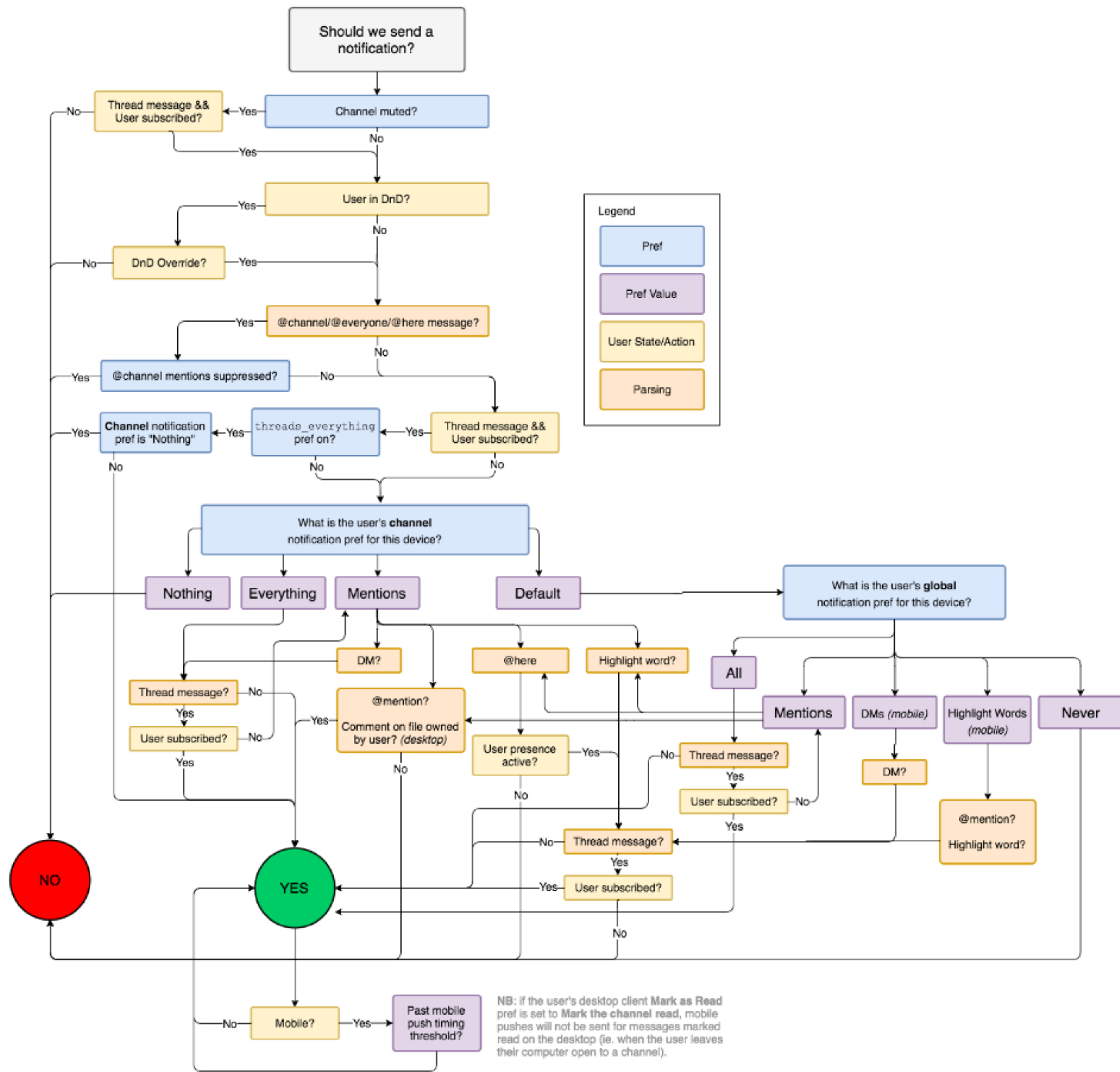
## Creating an account...

# 2FA Setup



**Legend**

- Existing functionality
- New functionality
- Optional functionality
- Conditional
- Control flow



# CREATING USER FLOWS

---

<https://www.draw.io>

Highly recommended for user flows!

OmniGraffle

Sketch

Adobe XD

Adobe Illustrator

**QUESTIONS?**